

# FTTH



## PRODUCT CATALOGUE

## **WHO ARE WE?**

**ICL** was conceived with the sole ambition of providing custom-made, effective, user-friendly and durable solutions to the world that is increasingly becoming more reliant on exchanging colossal amounts of data through wired and wireless networks.

Dedication to extensive research and development has already earned us the recognition of being a pre-eminent and excellent brand, trusted for networking and communication systems.

Our expertise lies in meeting the varied and challenging requirements of a large number of telecom operators and infrastructure developers with an array of innovative and reliable solutions.

The axial strength of **ICL** comes from a team of au fait professionals each of whom has decades of experience of catering to the ever-diversifying telecom, structured cabling and networking industry.

**Optical Boxes - Metal**

**Optical Closures**

**Optical Boxes - Plastic**

**Indoor/Outdoor Fibre Cables**

**Optical Patchcords & Pigtails**

**Optical Fast Connectors,  
Attenuators and  
Mechanical Splice**

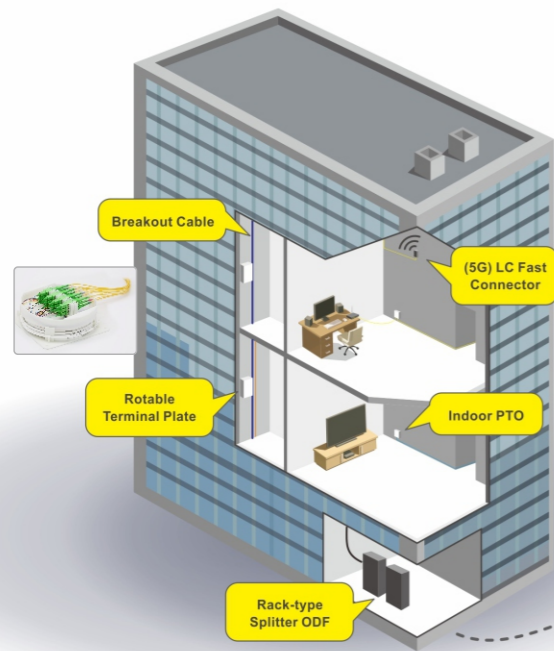
**Optical Adaptors**

**Optical Splitters**

**Optical Installation Accessories**

# CONTENTS

### MDU



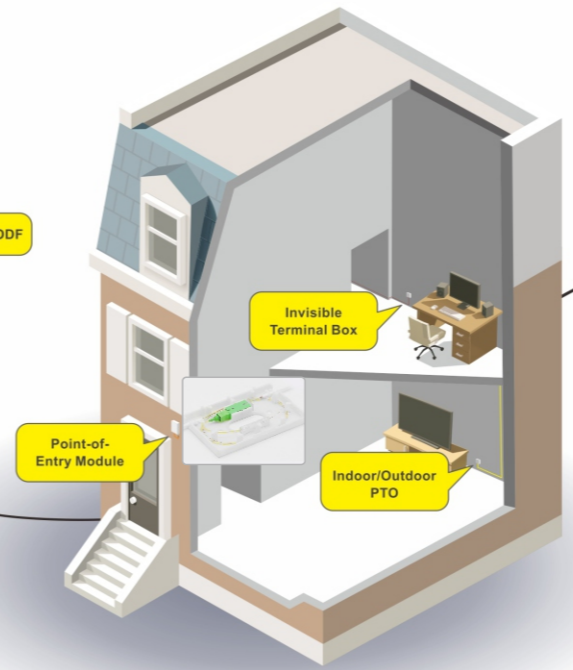
- 16-core Microcable
- Plastic Optical Hybrid Cable
- 72-core Breakout Cable
- 12-core Breakout Cable
- Indoor PTO Cable
- 2.5x1.5mm Flat Cable

### OSP



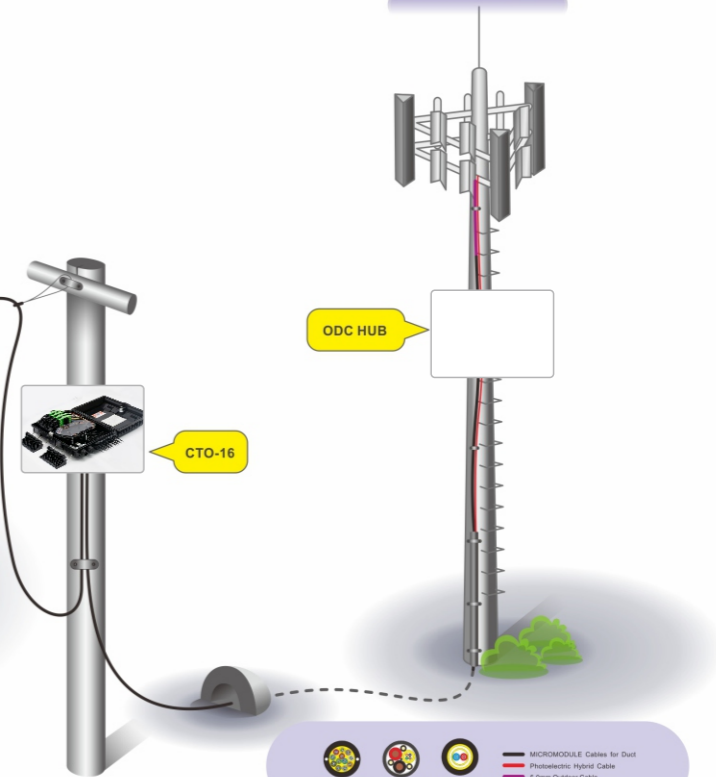
- ADSS Cable
- Duct Cable
- Indoor/Outdoor PTO Cable
- 3x2mm Flat Cable
- ADSS Cable
- Duct Cable
- Indoor/Outdoor PTO Cable
- 3x2mm Flat Cable

### SFU



- Outdoor Cable for Duct
- 2.5x1.5mm Low Friction Drop Cable
- Invisible Fiber
- Outdoor Cable for Duct
- 2.5x1.5mm Low Friction Drop Cable
- Invisible Fiber

### FTTA



- MICROMODULE Cables for Duct
- Plastic Optical Hybrid Cable
- 5.0mm Outdoor Cable
- MICROMODULE Cables for Duct
- Plastic Optical Hybrid Cable
- 5.0mm Outdoor Cable

# Optical **Metal** Boxes

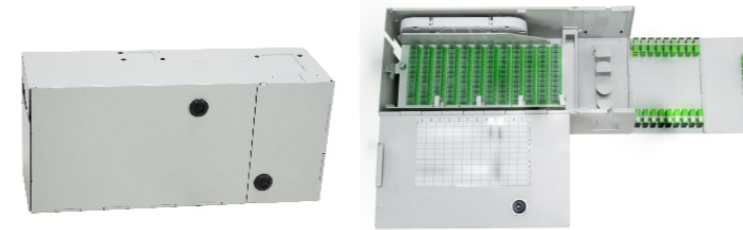
## Splitter Fibre Access Terminal - **32**



**Features**  
 Wall mounted.  
 Made from steel sheet.

Item No.	AST-MB01-32
Dimension( H x W x D)	470x400x220mm
Subscribers	4pcs 1x8 PLC Splitter,2pcs 1x16 PLC Splitter,1pcs 1x32 PLC Splitter Cassette
Max capacity of splicing	24
Max Number of Trays	1

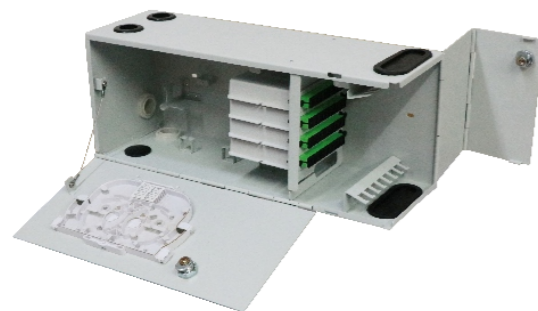
## Terminated Fibre Access Terminal - **144**



**Features**  
 Wall mounted.  
 Made from steel sheet.

Item No.	AST-MB03-144
Dimension( H x W x D)	200x450x150mm
Subscribers	144pcs SC/APC,SC/UPC
Max capacity of splicing	48
Max Number of Trays	4

## Splitter Fibre Access Terminal - **32**



**Features**  
 Wall mounted.  
 Made from steel sheet.

Item No.	AST-MB02-32
Dimension( H x W x D)	175x442x142mm
Subscribers	4pcs 1x8 PLC Splitter Cassette
Max capacity of splicing	12
Max Number of Trays	1

## Splicing Fibre Distribution Terminal - **120**



**Features**  
 Wall or pole mounted.  
 Made from aluminium sheet.

Item No.	AST-MP01-120
Dimension( H x W x D)	750x250x200mm
Subscribers	120pcs SC/APC,SC/UPC
Max capacity of splicing	312
Max Number of Trays	13
Input/ Output port	2 ( Φ18.0mm (PG21) ) / 2 ( Φ18.0mm (PG21) )

# Optical **Metal** Boxes

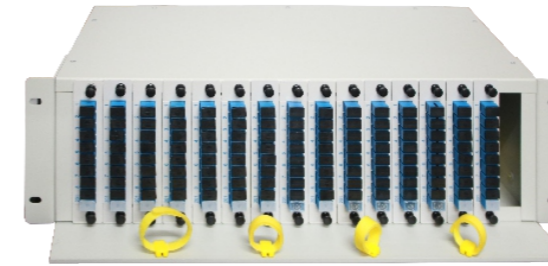
## Splicing Fibre Distribution Terminal - **240**



**Features**  
Wall or pole mounted.  
Made from aluminium sheet.

Item No.	AST-MP02-240
Dimension( H x W x D)	750x250x200mm
Subscribers	240pcs SC/APC,SC/UPC
Max capacity of splicing	312
Max Number of Trays	13
Input/ Output port	2 ( $\Phi$ 18.0mm (PG21) ) / 2 ( $\Phi$ 18.0mm (PG21) )

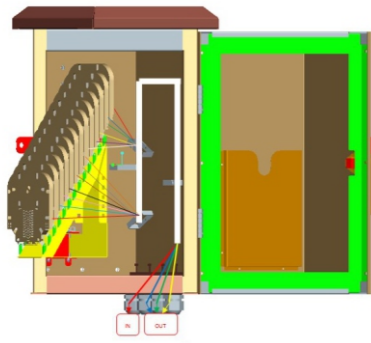
## Splitter Sub Rack- **120**



**Features**  
Rack mounted.  
Made from steel sheet.

Item No.	AST-MS01-120
Dimension( H x W x D)	3Ux482x210mm
Subscribers	15pcs 1x8 PLC Splitter Cassette

## Splicing Fibre Distribution Terminal - **312**



**Features**  
Wall or pole mounted.  
Made from aluminium sheet.

Item No.	AST-MP02-312
Dimension( H x W x D)	520x250x200mm
Max capacity of splicing	312
Max Number of Trays	13
Input/ Output port	2 ( $\Phi$ 18.0mm (PG21) ) / 2 ( $\Phi$ 18.0mm (PG21) )

## Terminated Sub Rack- **24**



**Features**  
Rack mounted.  
Swing out style  
Made from steel sheet.

Item No.	AST-MT01-24
Dimension( H x W x D)	1Ux482*350mm
Subscribers	24pcs SC/APC,SC/UPC
Max capacity of splicing	24
Max Number of Trays	1

# Optical **Metal** Boxes

## Terminated Sub Rack-**48**



### Features

Rack mounted.  
Swing out style  
Made from steel sheet.

Item No.	AST-MT01-48
Dimension( H x W x D)	2Ux482*350mm
Subscribers	48pcs SC/APC,SC/UPC
Max capacity of splicing	48
Max Number of Trays	2

## Terminated Sub Rack-**64**



### Features

Rack mounted.  
Swing out style  
Made from steel sheet.

Item No.	AST-MT01-64
Dimension( H x W x D)	1.5Ux482x247mm
Subscribers	8pcs 1x8 Mlni Splitter,4pcs 1x16 Mlni Splitter,2pcs 1x32 Mlni Splitter

## Terminated Sub Rack-**96**

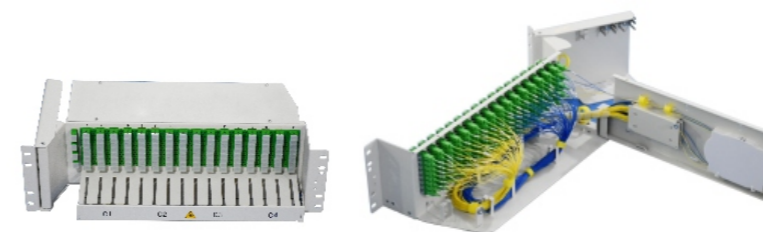


### Features

Rack mounted.  
Swing out style  
Made from steel sheet.

Item No.	AST-MT01-96
Dimension( H x W x D)	3Ux482x350mm
Subscribers	96pcs SC/APC,SC/UPC
Max capacity of splicing	96
Max Number of Trays	4

## Terminated Sub Rack-**128**



### Features

Rack mounted.  
Swing out style  
Made from steel sheet.

Item No.	AST-MT01-128
Dimension( H x W x D)	3Ux482x220mm
Subscribers	128pcs SC/APC,SC/UPC
Max capacity of splicing	12
Max Number of Trays	1

# Fibre Optic Closures

## Fibre Optic Closure - 2



### Features

- Offers both protection and connection.
- Suitable for direct and branch connection of cables
- Made from reinforced plastic
- High strength, corrosion resistance
- Compact structure, light weight, easy to install.
- Telecommunications subscriber loop.
- Degree of protection: IP65.

Item No.	AST-MH01-02
Dimension( H x W x D)	180x60x20mm
Max capacity of splicing	2
Max Number of Trays	1
Input/ Output port	1 ( $\Phi$ 4.8mm ) / 2 ( 2.0x3.0mm )
Sealing	Mechanical

## Horizontal Closure - 12

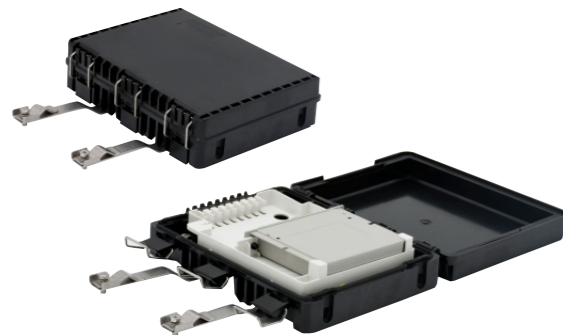


### Features

- Pole or wall-mounted.
- Save installation time by as much as 50 percent per network access point.
- Use with any common fiber type.
- Storage/Operating Temperature : -40°C to + 65°C.
- Degree of protection: IP68.

Item No.	AST-MH03-12
Dimension( H x W )	374x143mm
Subscriber Input/ Output port	SC/12 Ports, LC/24Ports, MPO/24 Ports
	1/12

## Horizontal Closure - 8



### Features

- Aerially mounted.
- Modular splitter design for 1x8, 1x4, 1x2.
- Easily opened and closed, no tools required
- Degree of protection: IP67.

Item No.	AST-MH02-8
Dimension( H x W x D)	170x250x60mm
Subscribers	1pcs 1x8 PLC Splitter Cassette
Max capacity of splicing	24
Max Number of Trays	1
Input/ Output port	2 ( $\Phi$ 11.0mm) /
Sealing	2 ( $\Phi$ 11.0mm) Mechanical

## Horizontal Closure - 16



### Features

- Aerially or wall mounted.
- Modular splitter design for 1x8, 1x6, 1x4, 1x2
- Easily opened and closed, no tools required
- Degree of protection: IP65.

Item No.	AST-HM02-16
Dimension( H x W x D)	207x376x113mm
Subscribers	2pcs 1x8 PLC Splitter Cassette
Max capacity of splicing	24
Max Number of Trays	1
Input/ Output port	3 ( $\Phi$ 12.5~21.5mm) /
Sealing	3 ( $\Phi$ 12.5~21.5mm) Mechanical

# Fibre Optic Closures

## Horizontal Closure - 96



**Features**  
Aerially mounted.  
Degree of protection: IP65

Item No.	AST-MH04-96
Dimension( H x W x D)	141x445x110mm
Max Capacity of Splicing	96
Max Number of Trays	4
Input/ Output port	2 ( $\Phi$ 10.0x16.0mm ) / 2 ( $\Phi$ 10.0x16.0mm )
Sealing	Mechanical

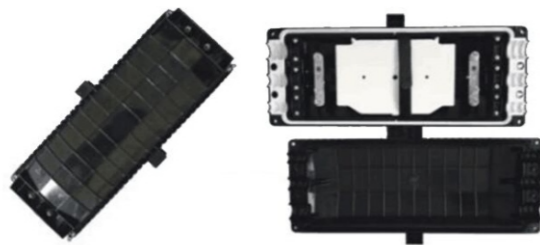
## Horizontal Closure - 96



**Features**  
Aerially mounted.  
Degree of protection: IP65

Item No.	AST-MH06-96
Dimension( H x W x D)	162x430x100mm
Max Capacity of Splicing	96
Max Number of Trays	4
Input/ Output port	4 ( $\Phi$ 12.0x17.0mm ) / 4 ( $\Phi$ 12.0x17.0mm )
Sealing	Mechanical

## Horizontal Closure - 96



**Features**  
Aerially mounted.  
Degree of protection: IP65

Item No.	AST-MH05-96
Dimension( H x W x D)	180x360x105mm
Max Capacity of Splicing	96
Max Number of Trays	4
Input/ Output port	3 ( $\Phi$ 11.5x22.5mm ) / 3 ( $\Phi$ 11.5x22.5mm )
Sealing	Mechanical

## Horizontal Closure - 48



**Features**  
Aerially mounted.  
Modular splitter design for 1x8,1x4,1x2.  
Easily opened and closed, no tools required  
Degree of protection: IP65

Item No.	AST-MH07-48
Dimension( H x W x D)	184x280x85mm
Max Capacity of Splicing	48
Max Number of Trays	2
Input/ Output port	2 ( $\Phi$ 12.5mm ) / 2 ( $\Phi$ 12.5mm )
Sealing	Mechanical



# Fibre Optic Closures

## Horizontal Closure - 96



### Features

Aerially mounted.  
 Modular splitter design for 1x8,1x4,1x2.  
 Easily opened and closed, no tools required  
 Degree of protection: IP65

Item No.	AST-MH07-96
Dimension( H x W x D)	184x280x100mm
Max Capacity of Splicing	96
Max Number of Trays	4
Input/ Output port	2 ( $\Phi$ 12.5mm ) / 2 ( $\Phi$ 12.5mm )
Sealing	Mechanical

## Dome Closure - 96



### Features

Aerially pole or manhole mounted.  
 Sealed by silicone sealer strip, sealant and pressure seal, or heat shrink tubes.  
 Easily opened and closed, no tools required  
 Degree of protection: IP68

Item No.	AST-FD01-96
Dimension( D x H )	$\Phi$ 175x445mm
Subscribers	18pcs SC/APC,SC/UPC
Max Capacity of Splicing	96
Max Number of Trays	4
Input/ Output port	1 ( $\Phi$ 57.0x75.0mm ) / 4 ( $\Phi$ 22.0mm )
Sealing	Heat shrink

## Dome Closure - 48



### Features

Aerially pole or manhole mounted.  
 Easily opened and closed, no tools required  
 Degree of protection: IP68

Item No.	AST-MA01-48
Dimension( D x H )	$\Phi$ 185x325mm
Max Capacity of Splicing	48
Max Number of Trays	4
Input/ Output port	2 ( $\Phi$ 22.0mm ) / 2 ( $\Phi$ 22.0mm )
Sealing	Heat shrink

## Dome Closure - 144



### Features

Aerially pole or manhole mounted.  
 Sealed by silicone sealer strip, sealant and pressure seal, or heat shrink tubes.  
 Easily opened and closed, no tools required  
 Degree of protection: IP68

Item No.	AST-FD02-144
Dimension( D x H )	$\Phi$ 160x440mm
Max Capacity of Splicing	144
Max Number of Trays	6
Input/ Output port	1 ( $\Phi$ 36.0x62.0mm ) / 4 ( $\Phi$ 20.0mm )
Sealing	Heat shrink

# Fibre *Optic* Closures

## Dome Closure - 216



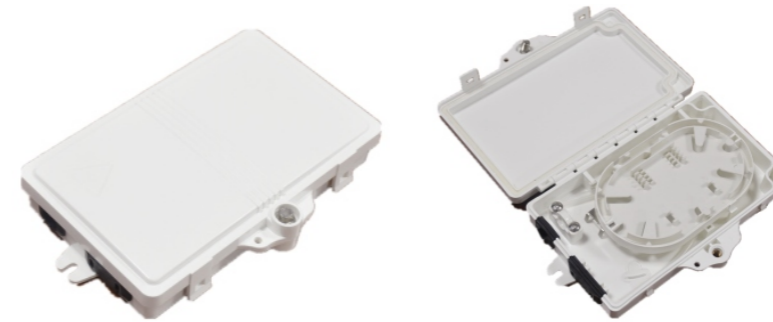
### Features

- Aerially pole or manhole mounted.
- Sealed by silicone sealer strip, sealant and pressure seal, or heat shrink tubes.
- Easily opened and closed, no tools required
- Degree of protection: IP68

Item No.	AST-FD02-216
Dimension( D x H )	Φ160x540mm
Max Capacity of Splicing	216
Max Number of Trays	6
Input/ Output port	1 ( Φ41.0x74.0mm ) / 4 ( Φ28.0mm )
Sealing	Heat shrink

# Optical *Plastic* Boxes

## Terminal Box - 2



### Features

- Wall-mounted.
- Optical adaptor
- Layered cable management.
- Bow-type drop cable can be spliced or mechanically connected, and redundant cable length can be stored inside.
- Degree of protection: IP55

Item No.	AST-PC01-02
Dimension( H x W x D)	170x120x30mm
Subscribers	2 SC/APC,SC/UPC
Max capacity of splicing	4
Max Number of Trays	1
Input/ Output port	1 ( Φ11.0mm ) / 2 ( 2.0x3.0mm )

## Terminal Box - 4



### Features

- Wall-mounted.
- Optical adaptor
- Layered cable management.
- Bow-type drop cable can be spliced or mechanically connected, and redundant cable length can be stored inside.
- Degree of protection: IP55

Item No.	AST-PC01-4
Dimension( H x W x D)	205x140x38mm
Subscribers	4 SC/APC,SC/UPC
Max capacity of splicing	4
Max Number of Trays	1
Input/ Output port	1 ( Φ11.0mm ) / 4 ( 2.0x3.0mm )

# Optical Plastic Boxes

## Access Terminal Box - 1



### Features

- Wall mounted
- Protects fibre bend radius
- Small, compact and smart design.
- Suitable for Telecommunications subscriber loop and Fibre To The Home (FTTH).

Item No.	AST-SE01-1
Dimension( H x W x D)	70x120x20mm
Subscribers	1pcs SC/APC,SC/UPC,RJ45(CATV)
Max capacity of splicing	1
Diameter of port	2.0x3.0mm

## Access Terminal Box - 2



### Features

- Wall mounted
- Protects fibre bend radius
- Small, compact and smart design.
- Suitable for Telecommunications subscriber loop and Fibre To The Home (FTTH).

Item No.	AST-DW02-2
Dimension( H x W x D)	100x80x23mm
Subscribers	2pcs SC/APC,SC/UPC
Max capacity of splicing	2
Diameter of port	2.0x3.0mm

## Access Terminal Box - 2



### Features

- Wall mounted
- Protects fibre bend radius
- Small, compact and smart design.
- Suitable for Telecommunications subscriber loop and Fibre To The Home (FTTH).

Item No.	AST-DW01-2 #
Dimension( H x W x D)	105x82x25mm
Subscribers	2pcs SC/APC,SC/UPC
Max. capacity of splicing	4
Diameter of port	Φ7.0mm,2.0x3.0mm

## Access Terminal Box - 4



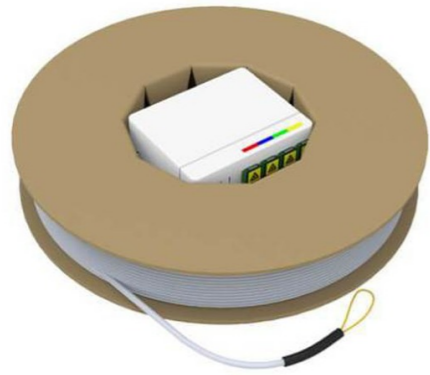
### Features

- Wall mounted
- Protects fibre bend radius
- Small, compact and smart design.
- Suitable for Telecommunications subscriber loop and Fibre To The Home (FTTH).

Item No.	AST-DW02-4
Dimension( H x W x D)	80x100x30mm
Subscribers	4pcs SC/APC,SC/UPC
Max. capacity of splicing	4
Diameter of port	Φ8.0mm,2.0x3.0mm

# Optical Plastic Boxes

## Access Terminal Box - 4



### Features

Wall-mounted.  
 Distribution cable can be pulled from the reel and routed to its final destination, then spliced as normal.  
 Can be used for backbone fibre backup and reserved for future expansion.  
 Suitable for Telecommunications subscriber loop and Fiber To The Home (FTTH).

Item No.	ATB-DW03-4
Dimension( H x W x D)	80x100x30mm
Subscribers	4pcs SC/APC,SC/UST
Max capacity of splicing	4
Diameter of port	Φ8.0mm,2.0x3.0mm

## Access Terminal Box - 1



### Features

Wall mounted  
 Protects fibre bend radius  
 Small, compact and smart design.  
 Suitable for Telecommunications subscriber loop and Fibre To The Home (FTTH).

Item No.	AST-SW01-1
Dimension( H x W x D)	70x120x20mm
Subscribers	1pcs SC/APC,SC/UPC
Max capacity of splicing	1
Diameter of port	2.0x3.0mm

## Access Terminal Box - 1

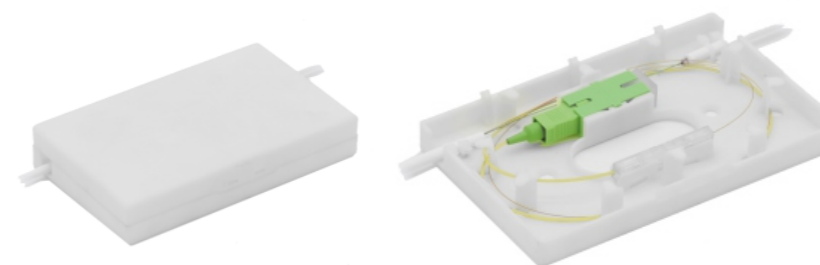


### Features

Wall mounted  
 Protects fibre bend radius, comes preloaded and terminated with 30/45m 900um fibre cable  
 Small, compact and smart design.  
 Suitable for Telecommunications subscriber loop and Fibre To The Home (FTTH).

Item No.	AST-IW01-1
Dimension( H x W x D)	93x83x34mm
Subscribers	1pcs SC/APC,SC/UPC
Diameter of port	Φ0.9mm

## Access Terminal Box - 1



### Features

Wall mounted  
 Protects fibre bend radius  
 Small, compact and smart design.  
 Suitable for Telecommunications subscriber loop and Fibre To The Home (FTTH).

Item No.	AST-SW02-1
Dimension( H x W x D)	120x75x24mm
Subscribers	1pcs SC/APC,SC/UPC
Max capacity of splicing	1
Diameter of port	Φ8.0mm

# Optical Plastic Boxes

## Access Terminal Box - 1



**Features**

- Wall mounted
- Protects fibre bend radius
- Small, compact and smart design.
- Suitable for Telecommunications subscriber loop and Fibre To The Home (FTTH).

Item No.	AST-SW03-1
Dimension( H x W x D)	134x80x22mm
Subscribers	1pcs SC/APC,SC/UPC
Diameter of port	2.0x3.0mm

## Access Terminal Box - 2



**Features**

- Wall mounted with sliding cover
- Protects fibre bend radius
- Small, compact and smart design.
- Suitable for Telecommunications subscriber loop and Fibre To The Home (FTTH).

Item No.	AST-SW02-2
Dimension( H x W x D)	130x84x24mm
Subscribers	2pcs SC/APC,SC/UPC
Max capacity of splicing	2
Diameter of port	Φ7.0mm,2.0x3.0mm

## Access Terminal Box - 2



**Features**

- Wall mounted
- Protects fibre bend radius
- Small, compact and smart design.
- Suitable for Telecommunications subscriber loop and Fibre To The Home (FTTH).

Item No.	AST-SW03-2
Dimension( H x W x D)	86x86x25mm
Subscribers	2pcs SC/APC,SC/UPC
Diameter of port	2.0x3.0mm

## Terminated Fibre Access Terminal - 12



**Features**

- Wall mounted
- Protects fibre bend radius
- Small, compact and smart design.
- Suitable for Telecommunications subscriber loop and Fibre To The Home (FTTH).

Item No.	AST-PB01-12
Dimension( H x W x D)	290x260x95mm
Subscribers	12pcs SC/APC,SC/UPC
Diameter of port	Φ4.0mm

# Optical Plastic Boxes

## Splitter Fibre Access Terminal - 8



### Features

- Wall or pole mounted.
- Optical splitter distribution panel
- Layered cable management.
- Bow-type drop cable can be spliced or mechanically connected, and redundant cable length can be stored inside.
- Degree of protection: IP55

Item No.	AST-PA01-8
Dimension( H x W x D)	260x220x80mm
Subscribers	1pcs 1x8 PLC Splitter Cassette
Max capacity of splicing	12
Max Number of Trays	1
Input/ Output port	2 ( Φ12.0mm ) / 2 ( Φ12.0mm )

## Terminated Fibre Access Terminal - 12

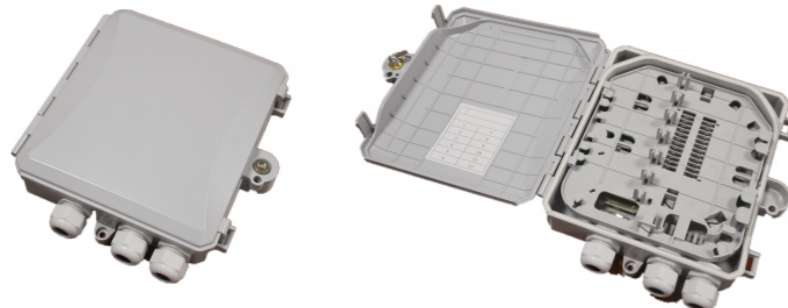


### Features

- Wall or pole mounted.
- Optical splitter distribution panel
- Layered cable management.
- Bow-type drop cable can be spliced or mechanically connected, and redundant cable length can be stored inside.
- Degree of protection: IP55

Item No.	AST-PA03-12
Dimension( H x W x D)	290x260x95mm
Subscribers	12pcs SC/APC,SC/UPC
Max capacity of splicing	24
Max Number of Trays	1
Input/ Output port	3 ( Φ12.0mm ) / 12 ( 2.0x3.0mm )

## Terminated Fibre Access Terminal - 12



### Features

- Wall or pole mounted.
- Optical splitter distribution panel
- Layered cable management.
- Bow-type drop cable can be spliced or mechanically connected, and redundant cable length can be stored inside.
- Degree of protection: IP55

Item No.	AST-PA01-12
Dimension( H x W x D)	220x205x50mm
Subscribers	12pcs SC/APC,SC/UPC
Max capacity of splicing	24
Max Number of Trays	1
Input/ Output port	1 ( Φ13.0mm ) / 2 ( Φ13.0mm )

## Terminated Fibre Access Terminal - 24



### Features

- Wall or pole mounted.
- Optical splitter distribution panel
- Layered cable management.
- Bow-type drop cable can be spliced or mechanically connected, and redundant cable length can be stored inside.
- Degree of protection: IP55

Item No.	AST-PA02-24
Dimension( H x W x D)	320x250x100mm
Subscribers	24pcs SC/APC,SC/UPC
Max capacity of splicing	24
Max Number of Trays	1
Input/ Output port	2 ( Φ12.0mm ) / 2 ( Φ12.0mm )

# Optical Plastic Boxes

## Splitter Fibre Access Terminal - 32



### Features

Wall or pole mounted.  
 Optical adaptor distribution panel  
 Layered cable management.  
 Bow-type drop cable can be spliced or mechanically connected, and redundant cable length can be stored inside.  
 Degree of protection: IP65

Item No.	AST-PA01-32
Dimension( H x W x D)	420x345x110mm
Subscribers	2pcs 1x16 or 4pcs 1x8 PLC Cassette Splitter
Max capacity of splicing	24
Max Number of Trays	1
Input/ Output port	2 ( Φ14.5mm ) / 2 ( Φ14.5mm )

## Terminated Fibre Access Terminal - 8



### Features

Wall or pole mounted.  
 Optical adaptor distribution panel  
 Layered cable management.  
 Bow-type drop cable can be spliced or mechanically connected, and redundant cable length can be stored inside.  
 Degree of protection: IP65

Item No.	AST-PA03-8
Dimension( H x W x D)	225x220x55mm
Subscribers	8pcs SC/APC,SC/UPC
Max capacity of splicing	12
Max Number of Trays	1
Input/ Output port	2 ( Φ12.0mm ) / 8 ( 2.0x3.0mm )

## Splitter Fibre Access Terminal - 8

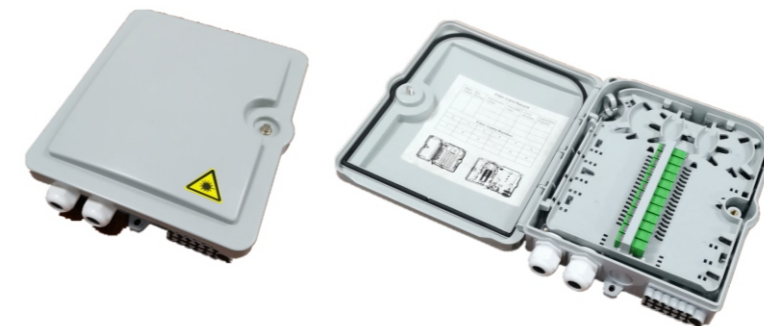


### Features

Wall or pole mounted.  
 Optical splitter distribution panel  
 Layered cable management.  
 Bow-type drop cable can be spliced or mechanically connected, and redundant cable length can be stored inside.  
 Degree of protection: IP65

Item No.	AST-PA02-8
Dimension( H x W x D)	240x205x60mm
Subscribers	1pcs 1x8 PLC Splitter
Max capacity of splicing	12
Max Number of Trays	1
Input/ Output port	2 ( Φ12.0mm ) / 12 ( 2.0x3.0mm )

## Terminated Fibre Access Terminal - 36



### Features

Wall or pole mounted.  
 Optical adaptor distribution panel  
 Layered cable management.  
 Bow-type drop cable can be spliced or mechanically connected, and redundant cable length can be stored inside.  
 Degree of protection: IP65

Item No.	AST-PA02-12
Dimension( H x W x D)	225x220x55mm
Subscribers	12pcs SC/APC,SC/UPC
Max capacity of splicing	36
Max Number of Trays	1
Input/ Output port	2 ( Φ12.0mm ) / 12 ( 2.0x3.0mm )

# Optical Plastic Boxes

## Terminated Fibre Access Terminal - 16



### Features

- Wall or pole mounted.
- Optical adaptor distribution panel
- Layered cable management.
- Bow-type drop cable can be spliced or mechanically connected, and redundant cable length can be stored inside.
- Degree of protection: IP65

Item No.	AST-PA03-16
Dimension( H x W x D)	315x267x80mm
Subscribers	16pcs SC/APC,SC/UPC
Max capacity of splicing	24
Max Number of Trays	1
Input/ Output port	2 ( $\Phi$ 13.0mm ) / 16 ( 2.0x3.0mm )

## Terminated Fibre Access Terminal - 16

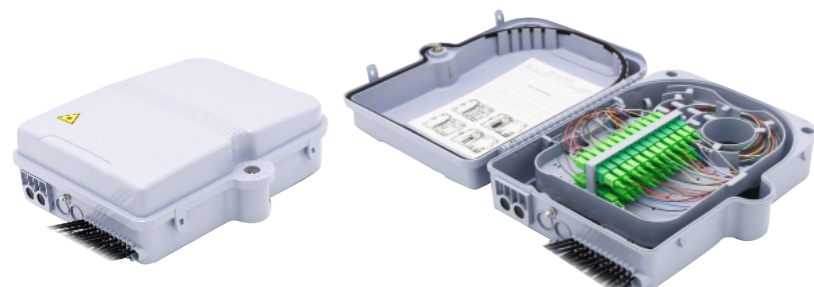


### Features

- Wall or pole mounted.
- Optical adaptor distribution panel
- Layered cable management.
- Bow-type drop cable can be spliced or mechanically connected, and redundant cable length can be stored inside.
- Degree of protection: IP65

Item No.	AST-PA04-16
Dimension( H x W x D)	334x296x118mm
Subscribers	16pcs SC/APC,SC/UPC
Max capacity of splicing	24
Max Number of Trays	1
Input/ Output port	2 ( $\Phi$ 12.0mm ) / 16 ( 2.0x3.0mm )

## Terminated Fibre Access Terminal - 24



### Features

- Wall or pole mounted.
- Optical adaptor distribution panel
- Layered cable management.
- Bow-type drop cable can be spliced or mechanically connected, and redundant cable length can be stored inside.
- Degree of protection: IP65

Item No.	AST-PA02-24
Dimension( H x W x D)	320x250x100mm 24pcs
Subscribers	SC/APC,SC/UPC
Max capacity of splicing	24
Max Number of Trays	1
Input/ Output port	2 ( $\Phi$ 14.5mm ) / 24 ( 2.0x3.0mm )

## Terminated Fibre Access Terminal - 16



### Features

- Wall or pole mounted.
- Optical adaptor distribution panel
- Layered cable management.
- Bow-type drop cable can be spliced or mechanically connected, and redundant cable length can be stored inside.
- Degree of protection: IP65

Item No.	AST-PA05-16
Dimension( H x W x D)	290x175x80mm
Subscribers	16pcs SC/APC,SC/UPC
Max capacity of splicing	24
Max Number of Trays	2
Input/ Output port	2 ( $\Phi$ 12.0mm ) / 16 ( 2.0x3.0mm )



# Optical Plastic Boxes

## Terminated Fibre Access Terminal - 16



### Features

- Wall or pole mounted.
- Optical adaptor distribution panel
- Layered cable management.
- Bow-type drop cable can be spliced or mechanically connected, and redundant cable length can be stored inside.
- Degree of protection: IP65

Item No.	AST-PA06-16
Dimension( H x W x D)	315x235x95mm
Subscribers	16 pcs SC/APC,SC/UPC
Max capacity of splicing	24
Max Number of Trays	1
Input/ Output port	2 ( Φ12.0mm ) / 16 ( 2.0x3.0mm )

## Terminated Fibre Access Terminal - 16



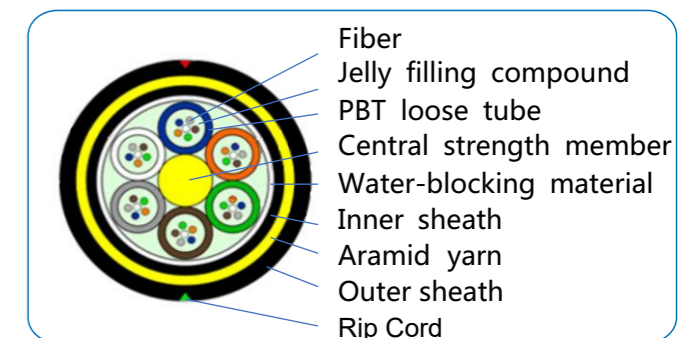
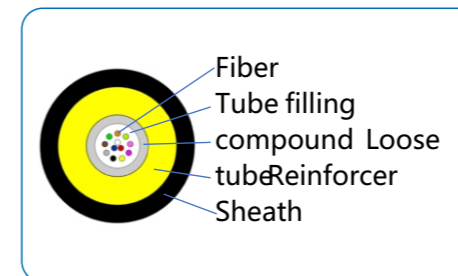
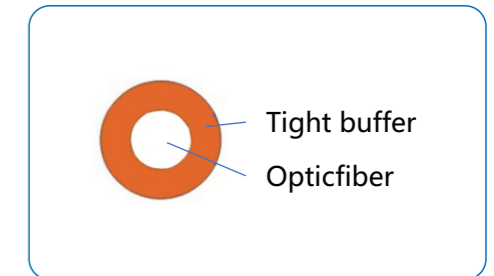
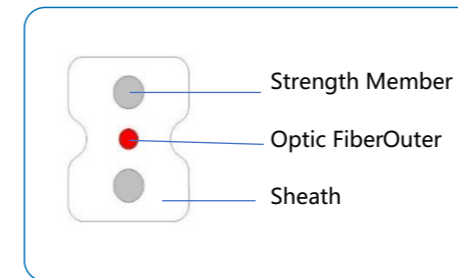
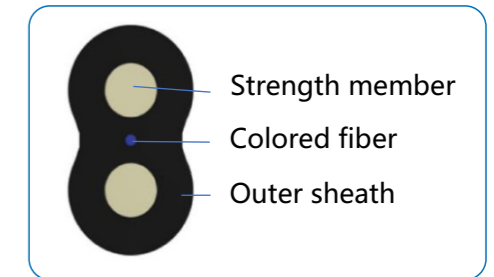
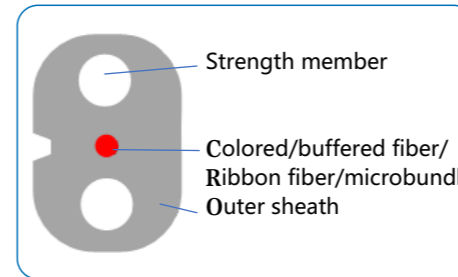
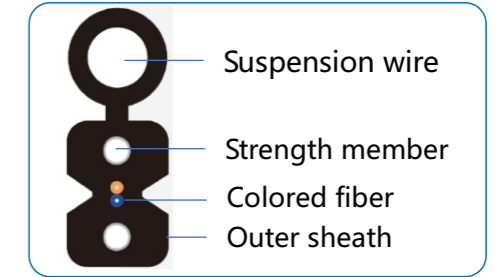
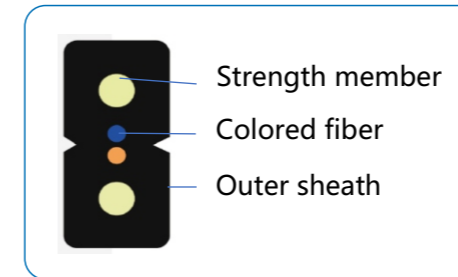
### Features

- Wall or pole mounted.
- Optical adaptor distribution panel
- Layered cable management.
- Bow-type drop cable can be spliced or mechanically connected, and redundant cable length can be stored inside.
- Degree of protection: IP65

Item No.	AST-PA07-16
Dimension( H x W x D)	315x267x80mm
Subscribers	16pcs SC/APC,SC/UPC
Max capacity of splicing	24
Max Number of Trays	1
Input/ Output port	2 ( Φ13.0mm ) / 16 ( 2.0x3.0mm )

# Indoor and Outdoor Fibre Optic Cable

We have a **HUGE** selection of Fibre Optic cables, for all types of applications. **Just call us.....**



# Optical Patchcord

## Outdoor Duplex Patchcord



### Features

- Pre-terminated assembly;
- Maximum flexibility and expandability;
- Compact size.
- High performance low loss
- Cable length customied

Fibers	2	Fiber type	G652D/G657A1/G657A2
Length	Customised	Connector type	LC,SC
Insertion loss	≤0.30 dB	Return loss	≥ 50 dB
Cable diameter	5.0mm	Fan-out tubing size	2xΦ3.0mm

## Duplex Patchcord



### Features

- Light Weight;
- Easy Assembly;
- Compact size.
- High performance low loss
- Used for indoor FTTH
- Cable length customized

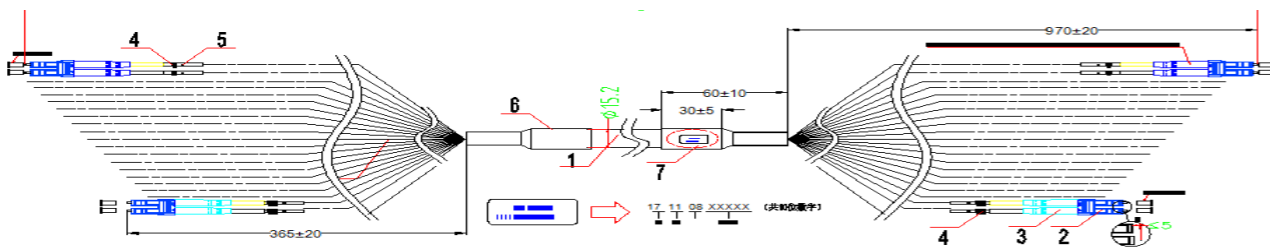
Fibers	2	Fiber type	G652D/G657A1/G657A2/G657B3
Cable diameter	2 x 2mm / 2 x 3mm	Connector type	LC,SC,FC
Insertion loss(APC & UPC)	≤0.30 dB	Return loss	APC : ≥ 55 dB UPC : ≥ 50 dB
Durability	≥ 500 times	Length	Customized

## 12/24 Core Outdoor Patchcord



### Features

- Pre-terminated assembly
- Maximum flexibility and expandability
- Compact size
- High tensile force.



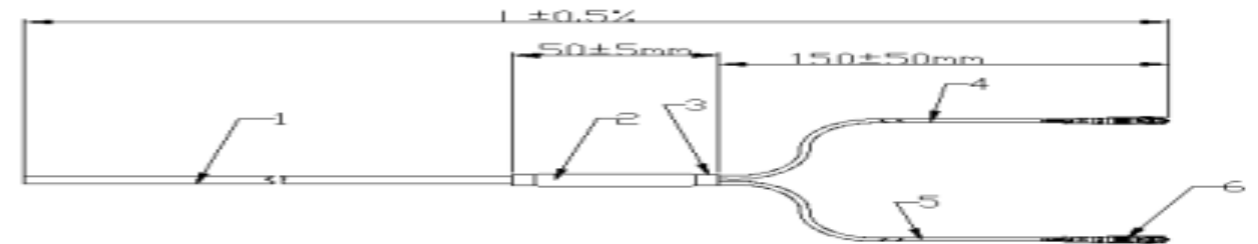
Fibers	12/24	Fiber type	G652D/G657A1/G657A2
Length	Customised	Connector type	LC,SC
Insertion Loss	≤0.30 dB	Return Loss	APC : ≥ 55 dB UPC : ≥ 50 dB
Cable diameter	12.7mm/15.2mm	Fan out tubing size	12x2.0mm/24x2.0mm

## Duplex Patchcord



### Features

- Light Weight
- Easy Assembly
- Small radius storage
- Outstanding repeatability



Fibers	2	Fiber type	G652D/G657A1/G657A2/G657B3
Cable diameter	4.0mm	Connector type	LC,SC,FC,ST,MU
Insertion loss(APC & UPC)	≤0.30 dB	Return loss	APC : ≥ 55dB UPSC: ≥ 50 dB
Cable Diameter	2xΦ0.9mm	Length	Customised

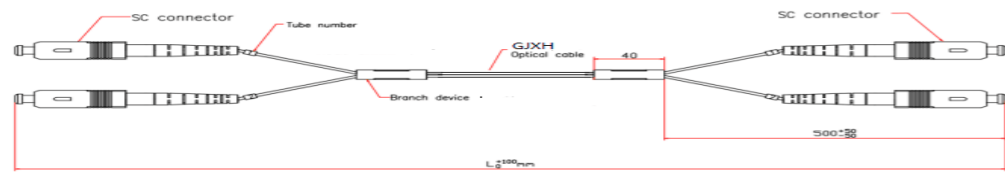
# Optical Patchcord

## Drop Cable Patchcord



### Features

- Pre-terminated assembly;
- Maximum flexibility and expandability;
- Compact size.
- High performance low loss
- Meets FTTH requirements



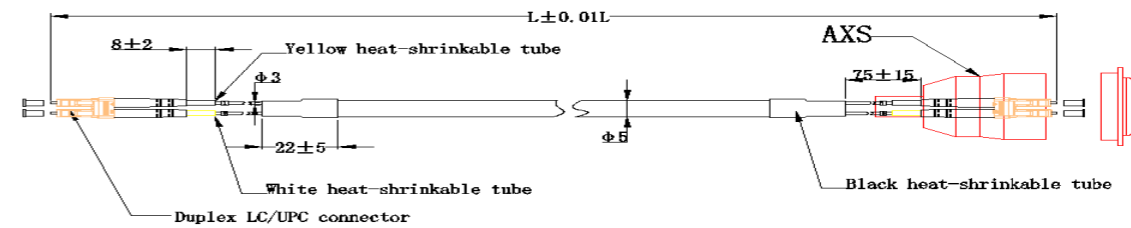
Fibers	1/2	Fiber type	G652D/G657A1/
Strength member	Steel/FRP/KFRP	Outer sheath	G657A2 PVC/LSZH
Length	Customized	Connector type	LC,SC
Cable size	2X3/5.3x2mm	Cable color	Black/White
Insertion loss (APC&UPC)	≤0.30 dB	Return loss	≥55(APC) ≥50(UPC)

## AXS Patchcord



### Features

- Pre-terminated assembly;
- Maximum flexibility and expandability;
- Compact size.
- High performance low loss
- Cable length customised



Fibers	2	Fiber type	G652D/G657A1/G657A2
Length	Customized	Connector type	LC,SC
Insertion loss	≤0.30 dB	Return loss	≥ 50 dB
Cable diameter	5.0mm	Fan-out tubing size	2 x 2mm

## ODC Patchcord



### Features

- Pre-terminated assembly;
- Maximum flexibility and expandability; IP-68 waterproof
- Simple to use, efficient and economical
- Cable length customised

Fibers	12/24	Fiber type	G652D/G657A1/
Length	Customised	Connector type	G657A2 LLCC,,SSCC,MPO
Insertion loss	≤0.30dB(SC&LC) ≤0.50dB(MPO) 5.0mm,7.0mm	Return loss	≥55dB(SC&LC) ≥55dB(MPO)
Cable diameter	or 4.5x7.0mm flat cable	Water Resistance	IP68

## MTP/MPO Patchcord



### Features

- High-precision MPO/MTP connector
- Factory pretermination, 100% tested
- Optional configuration of pulling hooks, easy for field installation.
- Rapid configuration, reduce installation time
- Rapid upgrading, supports parallel transmission

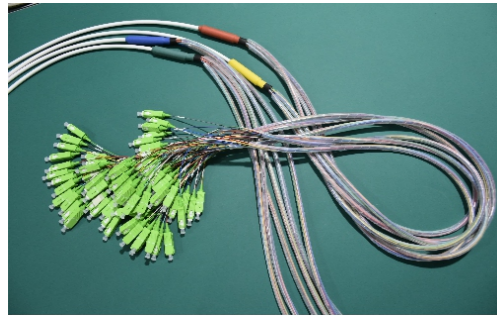


Utilize pinout method (A) for standard MT/MT applications. A (-A) extension is not required for standard Type A cables. However, you must use a (-A) extension when using a custom code. This configuration is the default standard unless otherwise stated with a pinout extension (-B, -C, -D).

Fibers	12/24	Fiber type	OM3/OM4
Length	Customized	Connector type	MPO/MTP ( Type A/B )
Insertion loss	< 0.5dB	Return loss	≥ 20 dB
Cable diameter	3.0MM	Vertical tension	120N or customer requirements

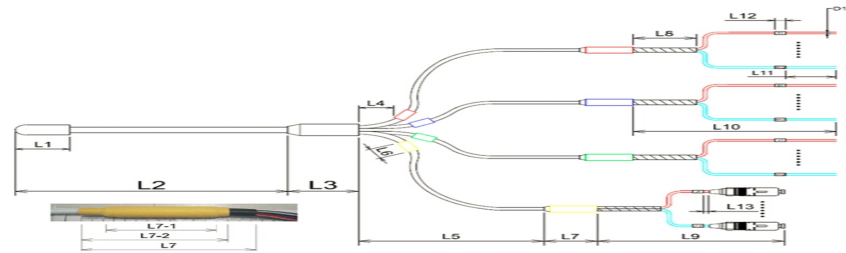
# Optical Patchcord

## Breakout Cable White



### Features

- Light Weight, Snap-together Molded Construction
- Easy Assembly
- Compact size.
- High performance low loss



Fibers	24/48/60/72/96/144	Fiber type	G652D/G657A1/G657A2
Connector types	LC,SC,FC,ST,MU	Cable colour	White or customized
Insertion loss(APC&UPC)	0.3 dB	Return loss	APC : $\geq 55$ dB UPC : $\geq 50$ dB
Cable diameter	8.70~13.00mm	Fan-out tubing size	24x0.9mm/48x0.9mm/60x0.9mm/ 72x0.9mm /96x0.9mm/144x0.9mm

## Breakout Cable Yellow



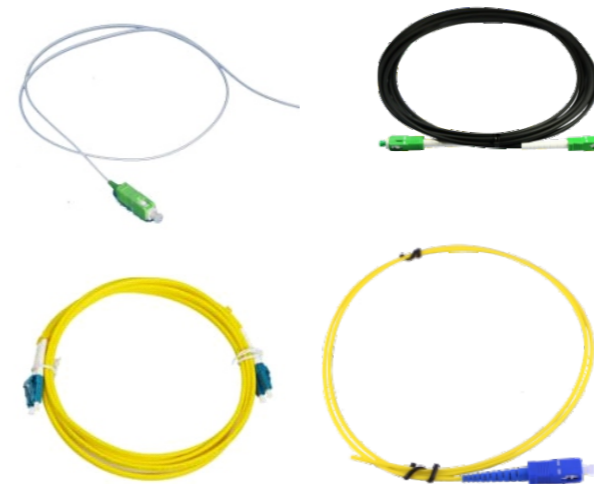
### Features

- Light Weight,
- Easy Assembly
- Compact size.
- High performance low loss

Fibers	4/12/36/72	Fiber type	G652D/G657A1/G657A2
Connector types	LC,SC,FC,ST,MU	Cable color	White or customised
Insertion loss(APC&UPC)	0.3dB	Return loss	APC : $\geq 55$ dB UPC : $\geq 50$ dB
Cable diameter	4.00~9.40mm	Fan-out tubing size	4x0.9mm/12x0.9mm/36x0.9mm/72x0.9mm or 4x2.0mm/12x2.0mm/36x2.0mm/72x2.0mm

# Optical Pigtail

## Fiber Pigtails



### Features

- Light Weight
- Cable length customised
- Easy Assembly
- High performance and low loss
- Simple to use,efficient and economical
- Available with one or both ends connected

Fibers	1	Fiber type	G652D/G657A1/G657A2/G657B3
Cable diameter	0.9mm,1.6mm,2.0mm,3.0mm	Connector type	LC,SC,FC,ST,MU
Insertion loss(APC & UPC)	$\leq 0.30$ dB	Return loss	APC : $\geq 55$ dB UPC : $\geq 50$ dB
Durability	$\geq 500$ times	Length	Customised

**Optical *Fast* Connectors,  
Mechanical Splice and Attenuators**

We have a **HUGE** selection of **Fast Connectors**, for all types of Optical Cables and Applications. **Just call us.....**



# Optical Adaptors

## Adaptor ST



### Features

- Low insertion loss
- Good compatibility repeatability
- High temperature resistance, acid and alkali resistance
- Stable performance

Connector type	ST-ST
Insertion loss	≤0.2dB
Operating temperature	-25~70°C

Fiber type	Single/Multi mode
Durability	500 times
Flame retardant	UL94-V0

## Adaptor SC



### Features

- Simplex and duplex styles
- High quality zirconia sleeves
- Available in different color
- Standard flange, short flange and no flange
- Used for fiber optical system connection

Connector type	SC-SC
Insertion loss	≤0.2dB
Operating temperature	-25~70°C
Dust proof cap	Black, transparent, semitransparent, built-in, shutter

Fiber type	Single/Multi mode
Durability	500 times
Flame retardant	UL94-V0

## Adaptor FC



### Features

- Simplex and duplex styles
- High quality zirconia sleeves
- Available in different colours;
- Square flange, D flange and rectangle flange
- High density
- Used for fiber optical system connection .

Connector type	FC-FC
Insertion loss	≤0.2dB
Operating temperature	-40~80°C

Fiber type	Single/Multi mode
Durability	500 times
Flame retardant	UL94-V0

## Adaptor LC



### Features

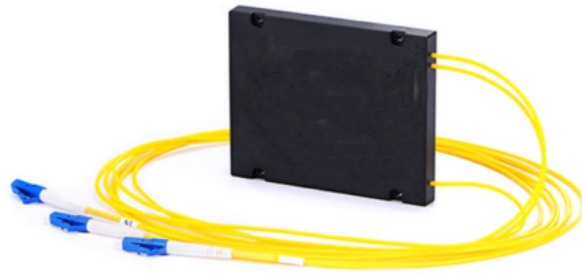
- Simplex and duplex styles
- High quality zirconia sleeves
- Available in different colours
- Standard flange, short flange and no flange
- High density
- Used for fiber optical system connection

Connector type	LC-LC
Insertion loss	≤0.2dB
Operating temperature	-25~70°C

Fiber type	Single/Multi mode
Durability	500 times
Flame retardant	UL94-V0

# Optical Splitters

## PLC Splitters



### Features

- Low insertion loss
- Excellent uniformity
- Low polarization dependent loss
- Broadband operation
- Low excess loss
- High performance and superior quality

Parameters	1x2	1x4	1x8	1x16	1x32
Operating Wavelength (nm)	1260 ~ 1650				
L*W*H(mm)		100*80*10		120*80*18	140*114*18
Insertion Loss (dB)	4.1	7.4	10.5	13.8	17.1
Loss Uniformity (dB)	0.6	0.8	0.8	1.0	15
Return Loss (dB) ( P/S )	UPC≥50 APC≥55				
PDL (dB)	0.3	0.8	0.3	1.0	1.2
WDL(dB)	1.0				
Directivity (dB)	≥55				
Pigtail Length (m)	1.0(±0.1) or Customer Specified				
Fiber Type	G657A1 / G657A2				
Meet the standard	GR-1209-CORE/GR-1221-CORE				



### Features

- Especially suitable for passive optical networks
- There are currently 1 by N and 2 by N types
- Low insertion loss and excess loss
- Broadband operation
- High performance and superior quality

Parameters	1x2	1x4	1x8	1x16	1x32
Operating Wavelength (nm)	1260 ~ 1650				
L*W*H(mm)		100*80*10		120*80*18	140*114*18
Insertion Loss (dB)	4.1	7.4	10.5	13.8	17.1
Loss Uniformity (dB)	0.6	0.8	0.8	1.0	15
Return Loss (dB) ( P/S )	UPC≥50 APC≥55				
PDL (dB)	0.3	0.8	0.3	1.0	1.2
WDL(dB)	1.0				
Directivity (dB)	≥55				
Pigtail Length (m)	1.0(±0.1) or Customer Specified				
Fiber Type	G657A1 / G657A2				
Meet the standard	GR-1209-CORE/GR-1221-CORE				

# Optical Splitters



## Features

The loss is not sensitive to light wavelength and can meet the transmission needs of different wavelengths. With uniform light distribution, the signal can be evenly distributed to the user.

Compact structure, small size, can be directly installed in the existing various handover box, no need to leave a lot of installation space.

Single device has many branches, which can reach more than 32 channels.

Parameters	1x2	1x4	1x8	1x16	1x32
Operating Wavelength (nm)			1260 ~ 1650		
L*W*H(mm)		130*100*25		130*100*50	130*100*102 266*100*50
Insertion Loss (dB)	4.3	7.6	10.7	14	17.3
Loss Uniformity (dB)	0.6	0.8	0.8	1.0	15
Return Loss (dB) ( P/S )			UPC≥50 APC≥55		
PDL (dB)	0.3	0.8	0.3	1.0	1.2
WDL(dB)			1.0		
Directivity (dB)			≥55		
Pigtail Length (m)	/				
Fiber Type	G657A1 / G657A2				
Meet the standard	GR-1209-CORE/GR-1221-CORE				

# Installation Accessories

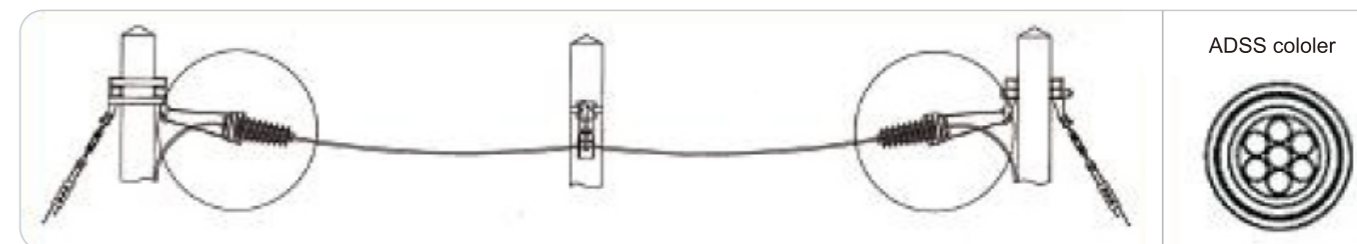
## Drop Cable Clamp

Application: It's used to fix the drop cable when access to subscriber.



## ADSS Cable Clamps

These clamps are designed for dead-ending aerial ADSS cables on access networks when spans do not exceed 100m. Different capacities are available to adapt to the cable Ø6~20mm.







**ICL, LONDON, UNITED KINGDOM**